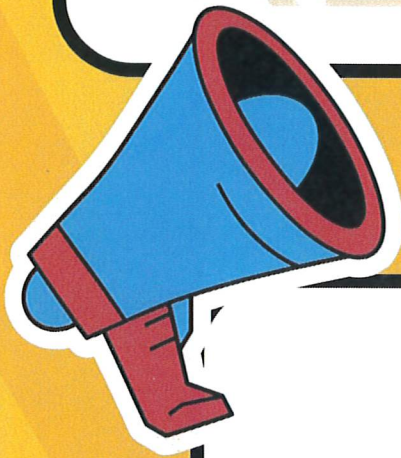




# REMINDER



## OPEN-ENROLLMENT DEADLINE (K-12)

THE DEADLINE TO SUBMIT  
NEW OPEN-ENROLLMENT APPLICATIONS  
FOR THE  
2025-2026 SCHOOL YEAR  
IS MARCH 1, 2025.

\*Students currently open-enrolled  
DO NOT need to submit a new application.  
Applications can be printed from the school  
website @

[WWW.LAMONISCHOOLS.ORG](http://WWW.LAMONISCHOOLS.ORG)